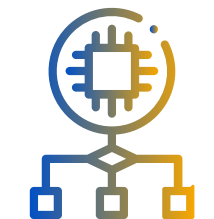
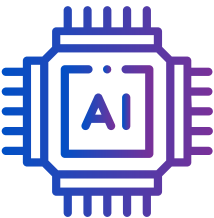
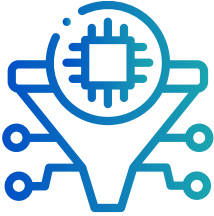


Revolutionizing AI Integration in Business Processes

EXECUTIVE BRIEF



Introduction

As companies increasingly incorporate Large Language Models (LLMs) into existing business processes and applications, Vertesia, an API-first platform, emerges as a strategic foundational asset to enable enterprise architects and traditional development teams to deliver significant business value with generative AI. This platform simplifies the integration of diverse AI technologies, allowing businesses to select, switch, and manage LLMs and inference providers with unprecedented flexibility. Vertesia is designed to accelerate the deployment of AI solutions, making it an essential tool for companies in sectors such as insurance, banking, retail, and technology, where leaders seek to improve business performance by automating and augmenting their content processes.

GenAI empowers businesses to create, optimize & personalize content at scale. However, many companies face challenges launching projects due to the rapidly evolving landscape, a lack of in-house AI/ML expertise, and the perceived risk of integrating all these fragmented vendor solutions. Vertesia addresses these challenges, enabling companies to go beyond experimentation and deploy enterprise-ready Generative AI content applications in weeks.

The rapid development and adoption of AI technologies necessitates an orchestration platform to manage these advancements effectively. These tools provide a robust framework for traditional development teams to integrate AI capabilities seamlessly and efficiently, fostering innovation and enhancing operational efficiency across various applications and existing business processes.

The Strategic Advantages of Vertesia

Scalability and Operational Flexibility

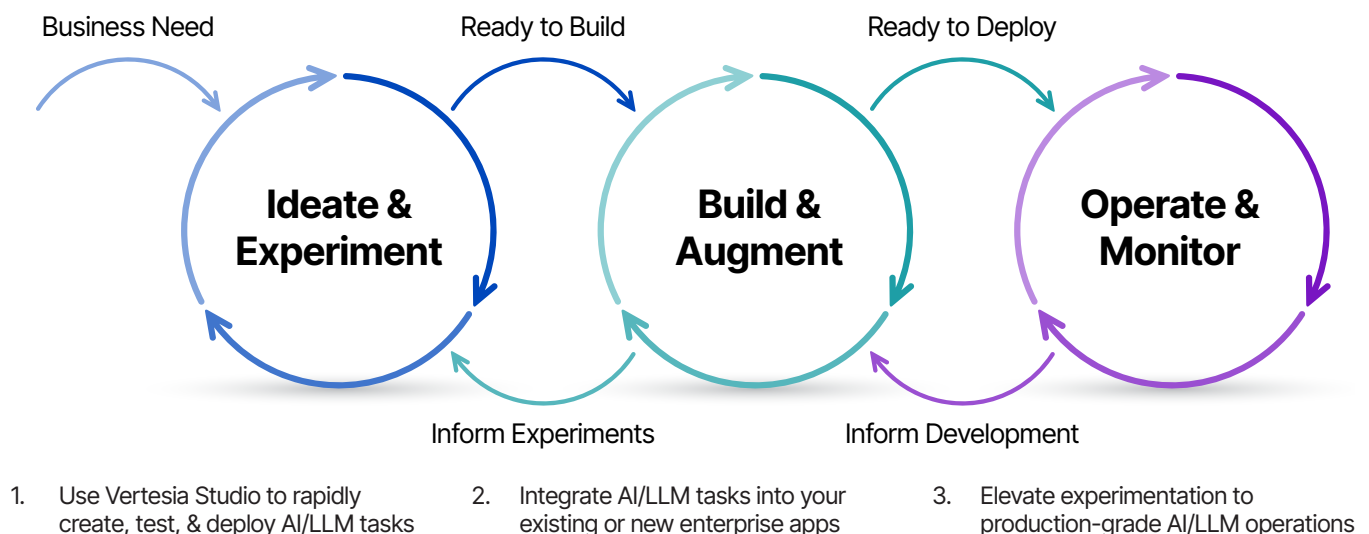
An API-first approach allows companies to use native classes, APIs, or Vertesia's Studio UI to support diverse use cases across the organization by testing and choosing the right LLM and inference provider for the specific task.

Vertesia centrally manages the LLMs and inference providers without being tied to a single vendor or technology. We abstract the complexity of format variability so the team can easily switch between LLMs without worrying about the underlying format variation between GPT4.5 on OpenAI and Claude 3 on Bedrock, for instance. This flexibility ensures enterprises can adapt to technological advancements and market demands without disruptions, costs associated with switching platforms, settling

for workarounds, or kludgy development processes (i.e., cutting and pasting code, as many must do today).

Vertesia was developed by leaders in the Enterprise Content Management space. They designed the platform to enable enterprise standards that modern digital workers demand across application scalability, security, and performance. For instance, functionality from configuring a Synthetic LLM environment allows teams to distribute load across multiple LLMs to support benchmarking, migration, and cost distribution strategies. In case of a task failure on one LLM, the Synthetic LLM automatically redirects to the next weighted LLM in the configuration group. This ensures consistent and reliable task execution.

How Vertesia Enables the Enterprise LLM Lifecycle



Streamlined Development & Faster Time to Market

Vertesia enhances the ability to prototype and iterate AI-driven applications quickly.

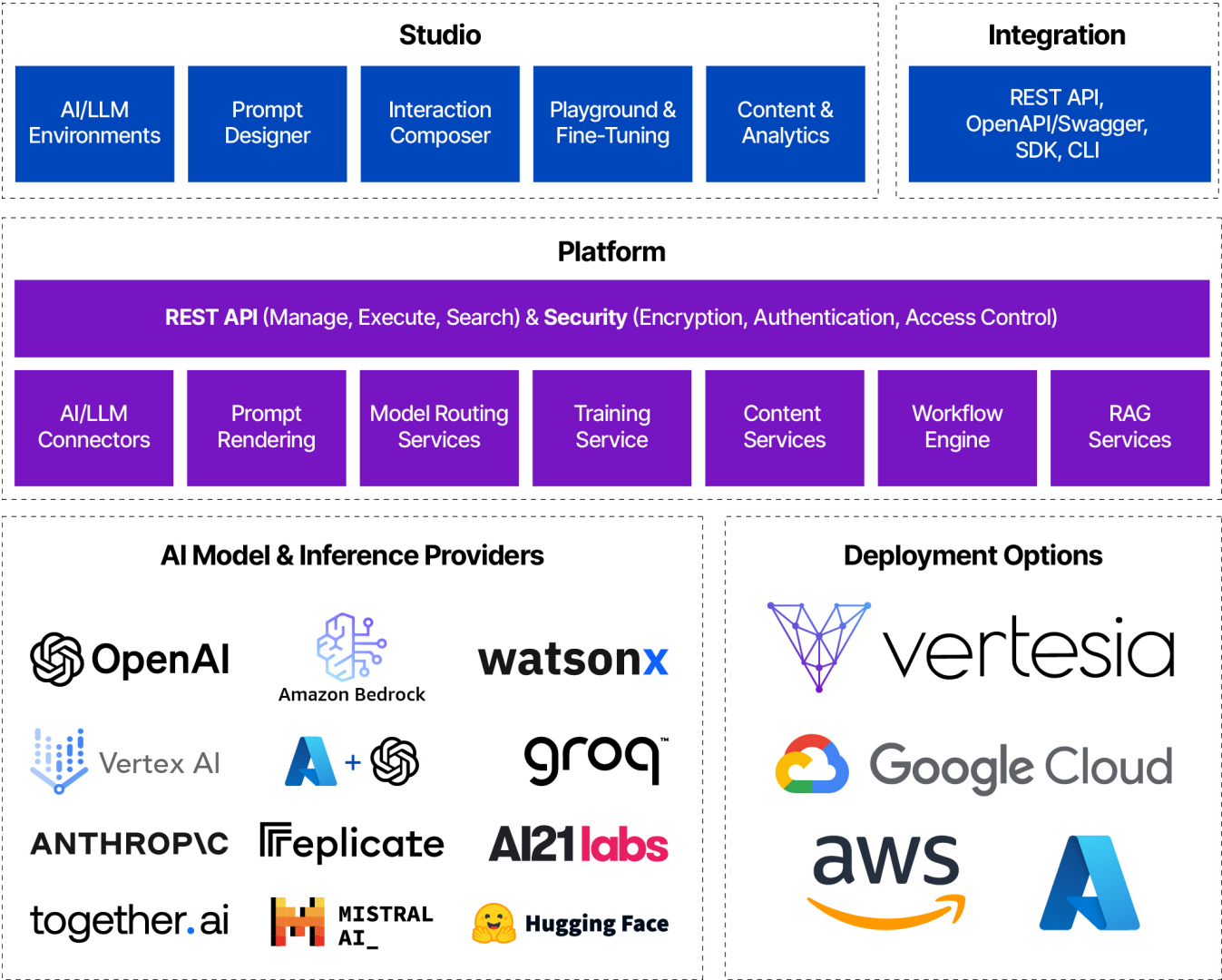
Developers can explore and benchmark different configurations and optimize prompts in a controlled environment, significantly reducing the development lifecycle from experimentation to production deployment.

Simplified Integration & Maintenance

By abstracting the complexities of LLM integrations, Vertesia reduces the technical burden and high cost on companies of building an infrastructure layer to support orchestration.

This consolidation enables more efficient management of AI resources, lowering overall AI project costs and development cycles and reducing integration issues by taking advantage of existing content infrastructure.

Vertesia Architecture



Conclusion

Vertesia is more than just an LLM application development framework; it is a strategic enabler for businesses looking to harness Generative AI's potential. It offers a pathway from experimental AI pilots to robust, production-ready enterprise 'smart' applications. As AI becomes integral to maintaining competitive advantage, the ability to rapidly deploy and manage these technologies effectively will dictate market leadership.

Businesses must act swiftly to integrate platforms like Vertesia to stay competitive in an AI-enabled world. Adopting such platforms aligns AI strategies with the capacity to quickly deliver on broader business objectives, ensuring sustainable growth and success in the evolving digital economy.

